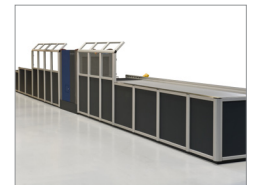
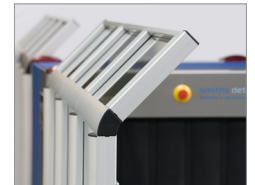


iLane.pro

INTEGRATED CHECKPOINT SOLUTION



Feature Highlights

- Increased security and faster passenger handling
- Checkpoint designs to facilitate enhanced operations such as
 - Remote Screening
 - Image Distribution
 - Directed Search / Recheck
- Innovative modular design allows system to be adapted to available space
- Extremely low-noise and safe operation
- Automatic bag spacing (variable 100 - 500 mm)
- Automatic bag reject diverter
- Motorized conveyor option with variable speed

iLane.pro – the new innovative checkpoint solution from Smiths Detection is the next generation of the worldwide proven Proline checkpoint.

With iLane.pro's modular design customers are provided with an opportunity to create their own individual checkpoint and with a wide range of components in a new, modern design, iLane.pro facilitates the best use of space and would replace and enhance any existing checkpoint area.

Through a combination of iLane.pro checkpoint design and enhanced operations and functionality, such as, tray return, directed search and remote screening customers are able to handle challenges such as increasing passenger throughput and performance at the security checkpoint.

iLane has been designed for the integration of X-ray units HS 6040i, HS 6046si, HS 6040aTiX as well as all the HS 7555 models and the new HS 6040-2is.

iLane.pro is the perfect choice as part of your security checkpoint of the future.

General Specifications

| | |
|---|---|
| Conveyor height/width | for 7555aTiX, 7555i and 7555si = 750 mm / 830 mm for 6040i and 6046si = 700 mm / 690 mm for 6040aTiX and 6040-2is = 800 mm / 690 mm |
| Conveyor speed | 0.17 - 0.44 m/sec (motorized section) |
| Max. object size | max. L = 600 mm, W = 400 mm, H = according to X-ray tunnel |
| Max. conveyor load | approx. 30 kg/m plastic rollers, 60 kg/m steel rollers |
| Practical throughput ¹⁾ | 550 bags/h |

Installation data

| | |
|---|--|
| Operating/storage temperature | 0° - 40°C (32° - 104°F) |
| Humidity | 5% - 95% non-condensing |
| Power supply (for auto divert) | mains voltage 230 V + 10-15%; frequency 50 Hz, stability ± 3%, 1-phase mains voltage 110 V + 10-15%; frequency 60 Hz, stability ± 3%, 1-phase |
| Internal power supply | 24 V |
| Conveyor length ²⁾ | 100 mm - 4000 mm |
| Protection class | IP 54 |
| Standby | < 55dB(A) |
| Operation without trays | < 58dB(A) |
| Operation with rubber-coated trays | < 62dB(A) |

Operating conditions

All baggage items must be transported in trays.

Features

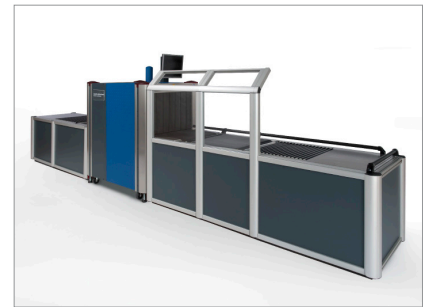
Automatic baggage spacing variable from 100 to 500 mm distance between the transport trays. Motorised conveyors with variable conveyor speed in the respective zones, baggage diversion without manual intervention, gravity fed tray retrun, operator consoles, recheck.

Options

Recheck station for X-ray unit, RFID tray identification, Remote Operator Screening, variable lengths, straight feed-in, search tables, roller conveyors

¹⁾ depending on safety procedures and passenger behaviour

²⁾ variable according to options



For product information, sales or service, please go to www.smithsdetection.com/locations

Smiths Detection Germany GmbH, Im Herzen 4, 65205 Wiesbaden, Germany
Modifications reserved. 95591688 01/09/2020 © Smiths Detection Group Ltd. - In some cases, the figures contain options
iLane.pro is a trademark of Smiths Detection Group Ltd.